



StorageConsole :: *Backup Manager*

APTARE StorageConsole Backup Manager gives you a centralized, real-time view of your enterprise backup and recovery environment to increase backup reliability and reduce costs.

INCREASE BACKUP AND RESTORE SUCCESS

The best way to increase the success of your backup environment is to eliminate the cause of failed backups. APTARE StorageConsole Backup Manager helps you pinpoint problems to increase the reliability of your backups and restores.

Backup and Restore Summary

Instantly see successful, partial, and failed backups. Click through charts to discover the root cause of reported problems.

Discovery of Unprotected Data

Reduce exposure of unprotected data by automatically identifying clients and data sets that aren't protected under a backup policy.

Identify Suspect Backups

Eliminate "false positives" by identifying partial or failed backups that report as successful by the backup software.

IMPROVE CAPACITY PLANNING

APTARE StorageConsole Backup Manager helps you maximize current backup resources and improve your capacity planning.

Drive Utilization

The Tape Library and Drive Utilization Report helps load balance your drives by identifying drives that are under utilized and those that are getting slammed.

Media Forecasting Dashboard

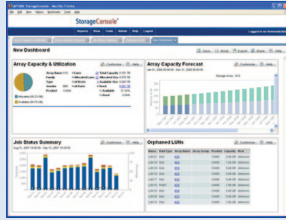
APTARE StorageConsole Backup Manager shows the capacity you'll need in the future based on your current and historical tape consumption. Easily see into the future where you'll need to purchase additional tapes.

Tape Media and Disk Utilization

Provides an intuitive view of available tape media capacity and utilization with indicator bars. Availability warnings enable you to manage proactively.

STREAMLINE COMPLIANCE

APTARE StorageConsole Backup Manager provides out-of-the-box compliance reports so you'll meet internal SLAs and pass external regulatory audits like Sarbanes Oxley.

:: Customizable Dashboards

Easily create and share customized dashboards with drag-and-drop reports

:: Media Forecasting Dashboard

Get accurate forecasts of future tape needs based on historical usage

:: Drive Utilization

Increase performance and utilization of tape drives and libraries

Mission Control Dashboard

Preconfigured dashboard designed for compliance reporting gives a snapshot status of every server by day using intuitive indicator lights.

Service Level Agreements (SLA)

Track backup performance against established SLA levels for backup start time, duration, and backup success.

IMPROVE BACKUP PERFORMANCE

APTARE StorageConsole Backup Manager helps you identify and fix bottlenecks that slow down performance throughout your backup environment.

Disk Usage and Performance

Allows you to see performance of your drives using the average job write speed. The report shows disk usage and total gigabytes written to disk.

Drive Performance Summary

Easily identify drives that are under-performing and need to be fixed. View the number of backup jobs and quantity of data written to the drive.

Client Usage

See which clients are the most heavily used in terms of number of backup jobs and gigabytes.

THE APTARE STORAGECONSOLE PLATFORM

The foundation for APTARE StorageConsole Backup Manager is the APTARE StorageConsole platform. APTARE StorageConsole is a Web 2.0 platform that delivers comprehensive reporting and management tools for storage environments – from backup to capacity management.

Web 2.0 Convenience

APTARE StorageConsole is built from the ground up on open Internet standards and Web 2.0 technologies. Web 2.0 features – such as “drag & drop” reports, tabbed browsing, and floating dialog boxes – provide effortless

access to reports and customization of how you view, organize, and share the information you need.

Out-of-the-Box Reports

APTARE StorageConsole provides the most popular reports right out of the box – enabling you to diagnose and manage your environment immediately with minimal training. In addition, easily customized dashboards enable you to tailor your desktop to feature the information that’s critical to you.

Information Sharing

APTARE StorageConsole streamlines the sharing of information to all levels of your organization. Email your customized dashboards and reports to other team members in CSV, or HTML format. Or schedule reports so they are automatically delivered in any time frame you choose: daily, weekly, or monthly.

SPECIFICATIONS**Supported Backup Software:**

VERITAS NetBackup 3.2–6.5; VMware Consolidated Backup for Netbackup; Symantec Backup Exec 9.1–12.5; Tivoli Storage Manager 5.2–5.5; EMC Legato NetWorker 7.2-7.4; HP Data Protector 5.5 & 6.0, Sun StorageTek ACSLS Manager, Oracle Recovery Manager (RMAN), EMC Avamar 4.x+

Portal OS

Windows 2000, 2003, or 2008 Server, Red Hat Enterprise Linux 4 & 5, SuSE Linux Enterprise 9 & 10, CentOS

Supported Browsers

Microsoft Windows: Internet Explorer 7.0+, Firefox 3.0+, Safari 3.2+

Apple Mac OS X: Safari 3.2+, Firefox 3.0+

Linux/Unix: Firefox 3.0+



747 Camden Ave., Suite A, Campbell, California 95008
Tel. 408.871.9848 Fax 408.871.9858
sales@aptare.com
www.aptare.com