



StorageConsole :: *Capacity Manager*

Gain a new perspective on your storage capacity with APTARE StorageConsole Capacity Manager. With web-based end to end reporting from hosts to the storage arrays it immediately maximizes storage utilization, improves capacity planning and reduces costs.

MAXIMIZE MANAGEMENT EFFICIENCY

Until now, it has been difficult to get a complete picture of an IT organization's storage capacity. Array vendor tools only provide an array-side view of storage allocation without providing actual usage metrics from the hosts. APTARE StorageConsole Capacity Manager provides end-to-end storage capacity reporting from the hosts to the storage array to give administrators greater control over storage management.

- Automated mapping shows the relationship between each host and LUN in your environment to convey how the storage resources are being used.
- Host utilization show the amount of storage capacity allocated and used by each host
- Array utilization shows the amount of allocated and used storage on each storage array
- Application utilization easily identifies the amount of storage used vs. allocated by application

MAXIMIZE RESOURCES. REDUCE COSTS.

In the face of continuous storage growth and reduced IT budgets, storage administrators are tasked with finding more storage capacity with fewer resources. APTARE StorageConsole Capacity Manager helps maximize existing storage, and reduce costs by delaying new storage purchases.

- Reduce capital expenditures spending on new storage by maximizing utilization of existing storage. Identify over-provisioned storage or orphaned LUNs that can be reclaimed for other storage users.
- Acquire new storage at a reduced cost by delaying new storage purchases until absolutely necessary. Storage densities are increasing while the cost of storage is decreasing.
- Future forecasting helps align storage purchases with corporate purchasing cycles, preventing emergency storage purchases.

PRECISION FORECASTING

APTARE StorageConsole Capacity Manager features a predictive analysis engine that predicts your future storage capacity needs based on your current usage levels and growth metrics, to achieve a level of forecast accuracy previously unattainable.

- See historical and current host storage usage as well as predictive growth in the future

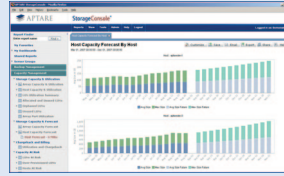


:: Customizable Dashboards



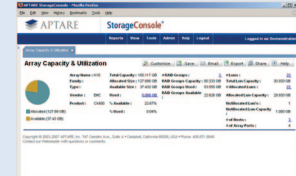
Easily create and share customized dashboards with drag-and-drop reports

:: Storage Capacity Forecasting



Improve planning with precise forecasts of future storage capacity

:: Allocated and Used Capacity



Immediately view amount of storage capacity – both allocated and used

- View historical and current array capacity and predictive future growth
- See the historical and current storage consumption from applications and predictive growth trends for the future

IMPROVE APPLICATION AVAILABILITY

Make sure that mission-critical applications always have the optimum amount of storage that they require. APTARE StorageConsole Capacity Manager provides application centric views that show you critical capacity information on the most important applications.

- Proactive monitoring and alerting automatically notifies you if any application is approaching a dangerous threshold.
- Ensure that each application has the optimal allocated storage based on current and historical usage levels
- View application storage usage vs. allocation levels to gain a better understanding of each application's true consumption levels

CHARGEBACKS

- Chargeback reporting shows the storage consumption levels with the associated costs (based on user-defined pricing).

THE APTARE STORAGECONSOLE PLATFORM

The foundation for APTARE StorageConsole Capacity Manager is the APTARE StorageConsole platform. APTARE StorageConsole is a Web 2.0 platform that delivers comprehensive reporting and management tools for storage environments – from backup to capacity management.

Web 2.0 Convenience

APTARE StorageConsole is built from the ground up on open Internet standards and Web 2.0 technologies. Web 2.0 features – such as “drag & drop” reports, tabbed browsing, and floating dialog boxes – provide effortless

access to reports and customization of how you view, organize and share the information you need.

Out-of-the-Box Reports

APTARE StorageConsole provides the most popular reports right out of the box – enabling you to diagnose and manage your environment immediately with minimal training. In addition, easily customized dashboards enable you to tailor your desktop to feature the information that's critical to you.

Information Sharing

APTARE StorageConsole streamlines the sharing of information to all levels of your organization. Email your customized dashboards and reports to other team members in PDF, CSV, or HTML format. Or schedule reports so they are automatically delivered in any time frame you choose: daily, weekly, or monthly.

SPECIFICATIONS

Supported Storage Arrays

Hitachi Data Systems: Hitachi Universal Storage Platform V, Network Storage, Controller, Adaptable Modular Storage, Workplace Modular Storage, Thunder, Lightning and TagamaStore; **EMC:** CLARiiON, Symmetrix
HP: StorageWorks XP & EVA Series

Supported Hosts

Windows, Solaris, AIX, HP-UX and Linux operating systems

Portal OS

Windows 2000, 2003, or 2008 Server, Red Hat Enterprise Linux 4 & 5, SuSE Linux Enterprise 9 & 10, CentOS

Supported Browsers

Microsoft Windows: Internet Explorer 7.0+, Firefox 3.0+, Safari 3.2+
Apple Mac OS X: Safari 3.2+, Firefox 3.0+
Linux/Unix: Firefox 3.0+



747 Camden Ave., Suite A, Campbell, California 95008
Tel. 408.871.9848 Fax 408.871.9858
sales@aptare.com
www.aptare.com