

StorageConsole :: *File Analytics*

BENEFITS

- Manage unstructured growth across a global enterprise.
- Minimize corporate risk by identifying and removing sensitive, unwanted or non-corporate data.
- Perform frequent trending to identify usage patterns and cost savings and set automated policies based on this knowledge.
- Lower the total cost of ownership through increased utilization and reduced storage purchases.
- Improve reclamation, archiving, and lifecycle management efforts by identifying inactive and stale data.
- Implement department charge-back for unstructured data.

GAIN VISIBILITY AND CONTROL OF YOUR UNSTRUCTURED DATA

A significant amount of your data exists as files such as emails, documents, and digital media. While many of these files are critical to the enterprise, countless others are duplicates, stale, or worse yet, inappropriate and non-compliant. Many organizations don't know what file content they have, how much exists, who created it, what resources it is consuming and how much is duplicated in multiple locations.

Managing this unstructured data is critical to reducing your storage costs and corporate risk. Until now, this task has been difficult and time consuming, and can impact performance of critical systems. APTARE StorageConsole File Analytics eliminates these problems using agentless data collection techniques to quickly glean file information from filesystems in multiple storage systems and then store this data in a purpose-built database. This patented technology provides insight into billions of files, highlights inappropriate data use, assists with compliance and legal regulations, and identifies duplicate and obsolete data for improved storage tiering.

FILE INFORMATION AGGREGATION AND CLASSIFICATION

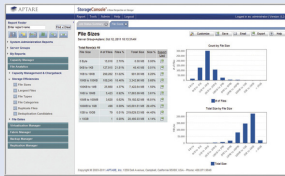
Built-in file profiling and classification in the form of knowledge aggregators enables users to quickly categorize vast amounts of data. The information is stored in a purpose-built database that is pushed as structured objects into the APTARE StorageConsole Oracle database. Here, the aggregated data is analyzed to pinpoint problems to identify areas of growth. As this aggregated information persists over time, users can review historical trending and analytics on aspects of their unstructured data.

POLICY AUTOMATION WITH FILE LIST EXPORT

The APTARE StorageConsole File Analytics File List Export feature creates lists of files based on user-based policies, which then can be fed into any data mover for archiving, implementation of storage-tiering policies or compliance file management. For example, a list of all files not accessed in more than six months from selected NAS appliances can be exported and then fed to an archival appliance.

UNIQUE APPROACH TO PROFILING UNSTRUCTURED DATA

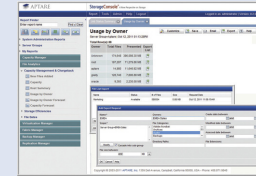
APTARE StorageConsole File Analytics differs from other file profiling tools in five areas. First, it uses lightweight, optimized data collectors that are tuned for each filesystem or NAS environment. While other profiling tools "crawl the file system",

:: File Size Report

Easily see the distribution of files by size to identify which ones consume the most resources.

:: Modified Files Report

Gauge the currency of data and set policies to remove stale data.

:: Files by Owner

View file usage by business owner and export into .csv file for easy data manipulation.

APTARE's unique approach offers extremely fast retrieval of file information with minimal overhead. Second, the retrieved file-level information is transmitted to a highly scalable, purpose-built database designed to hold billions of file-level details. This innovative approach overcomes the scalability challenges of storing this massive quantity of information in a relational database. Third, File Analytics can quickly query the database and turn the data into business information using knowledge aggregators. These results are fed into the APTARE StorageConsole Oracle database. Fourth, APTARE's File List Export provides users with the ability to extract file-level information from its optimized database for use in existing storage resource management tools. Finally, APTARE StorageConsole aggregates this information and graphically represents trends over time, whereas other profiling tools only provide "point-in-time" views of this aggregation.

USE CASES

Policy Enforcement and Compliance

A major concern for IT staff centers on unauthorized use of corporate resources; for example, NAS volumes that hold files unrelated to the business, such as private music or videos. APTARE StorageConsole File Analytics is able to aggregate and analyze information by file type, making it a perfect watchdog for enforcing corporate retention and unauthorized usage policies.

Security and Corporate Risk Mitigation

Sensitive and non-corporate files represent a security risk and APTARE StorageConsole File Analytics can help identify these files. Data owned by employees who are terminated or reassigned also represent a security concern. Files owned by these employees can be quickly identified and then quarantined or archived to ensure corporate guidelines on data ownership and retention are maintained.

Storage Tiering Decisions

The sheer deluge of data makes it critical to store unstructured data on appropriate storage tiers throughout its lifecycle. APTARE StorageConsole File Analytics provides relevant information such as last access dates, enabling storage administrators to determine the "time value" of files to an enterprise and then move data to specific tiers based on the value of the data.

Reclamation and Deduplication

End-user files often have numerous versions that are duplicated and stored in multiple locations, needlessly consuming vast amounts of storage resources. APTARE StorageConsole File Analytics can assist in quickly identifying these files, along with their locations and owners so that IT staff can free up storage resources for business-critical information. Consolidating duplicate files and removing inactive files results in faster, improved data backups.

THE APTARE STORAGECONSOLE PLATFORM

APTARE StorageConsole File Analytics is fully integrated into the APTARE StorageConsole unified storage management platform for comprehensive reporting and management of storage and data protection environments. APTARE StorageConsole provides an end-to-end view of the entire environment, enabling you to optimize data center performance, reduce TCO (total cost of ownership) and correlate a broad view of storage capacity at the LUN level, with a granular view of individual files.

SPECIFICATIONS

APTARE's Supported Environments data sheet can be found online at: www.aptare.com



1359 Dell Avenue, Campbell, CA 95008
Tel. 408.871.9848 Fax 408.871.9858
sales@aptare.com
www.aptare.com